









V. IZMJENE I DOPUNE  
PROSTORNOG PLANA  
KOPRIVNIČKO-KRIŽEVAČKE ŽUPANIJE  
12. GEOTERMALNA ELEKTRANA LEGRAD

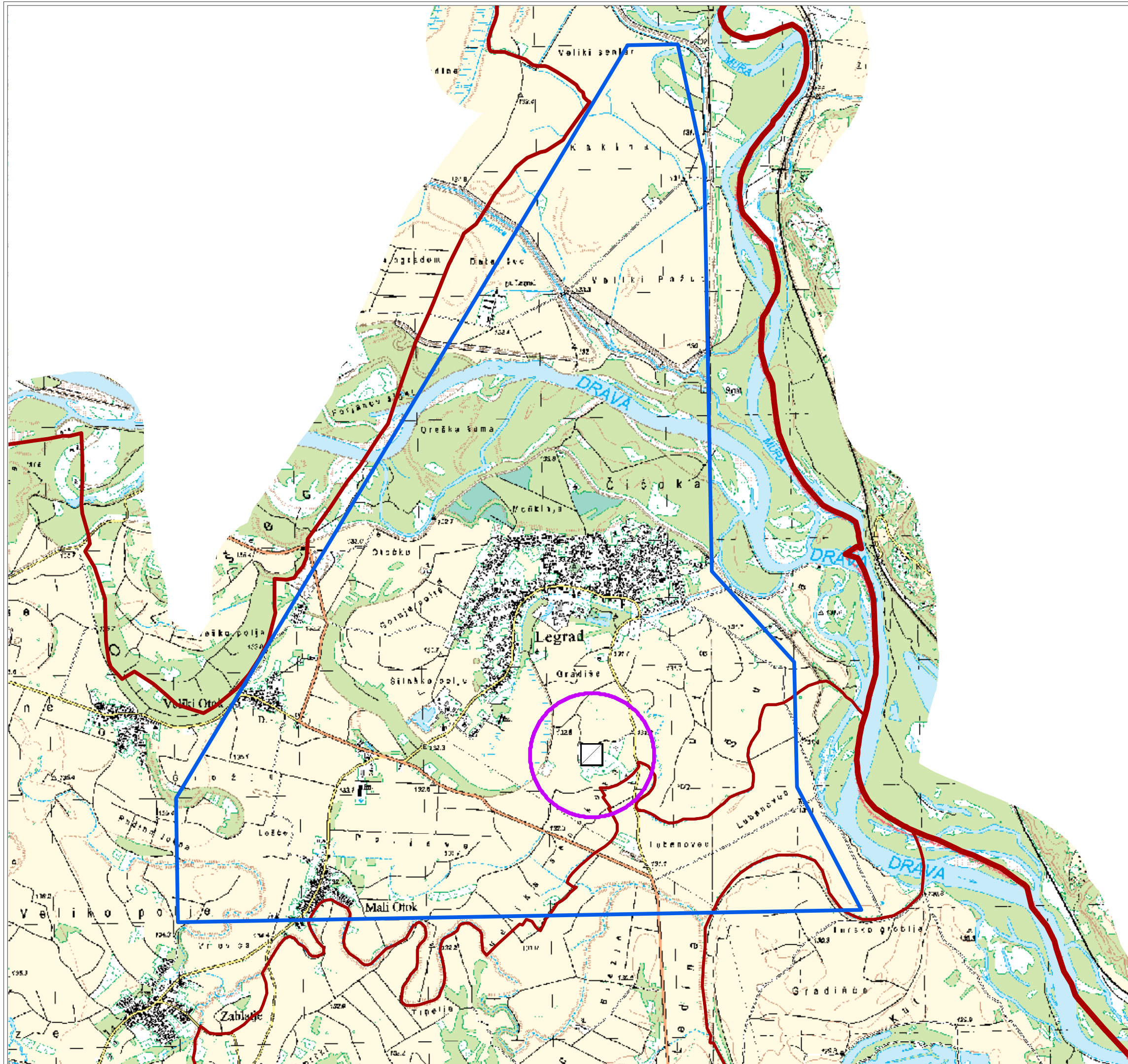


MJERILO 1 : 30 000

TUMAČ PLANSKOG ZNAKOVLJA

POSTOJEĆE / PLANIRANO

-  GRANICA DRŽAVE
-  GRANICA ŽUPANIJE
-  GRANICA GRADA/OPĆINE
-  GEOTERMALNA ELEKTRANA
-  TOČNA POZICIJA ZA SMJEŠTAJ  
GEOTERMALNE ELEKTRANE  
- radijus 500 m
-  EKSPLOATACIJSKO POLJE  
GEOTERMALNIH VODA "LEGRAD-1"



ZAVOD ZA PROSTORNO UREĐENJE  
KOPRIVNIČKO-KRIŽEVAČKE ŽUPANIJE